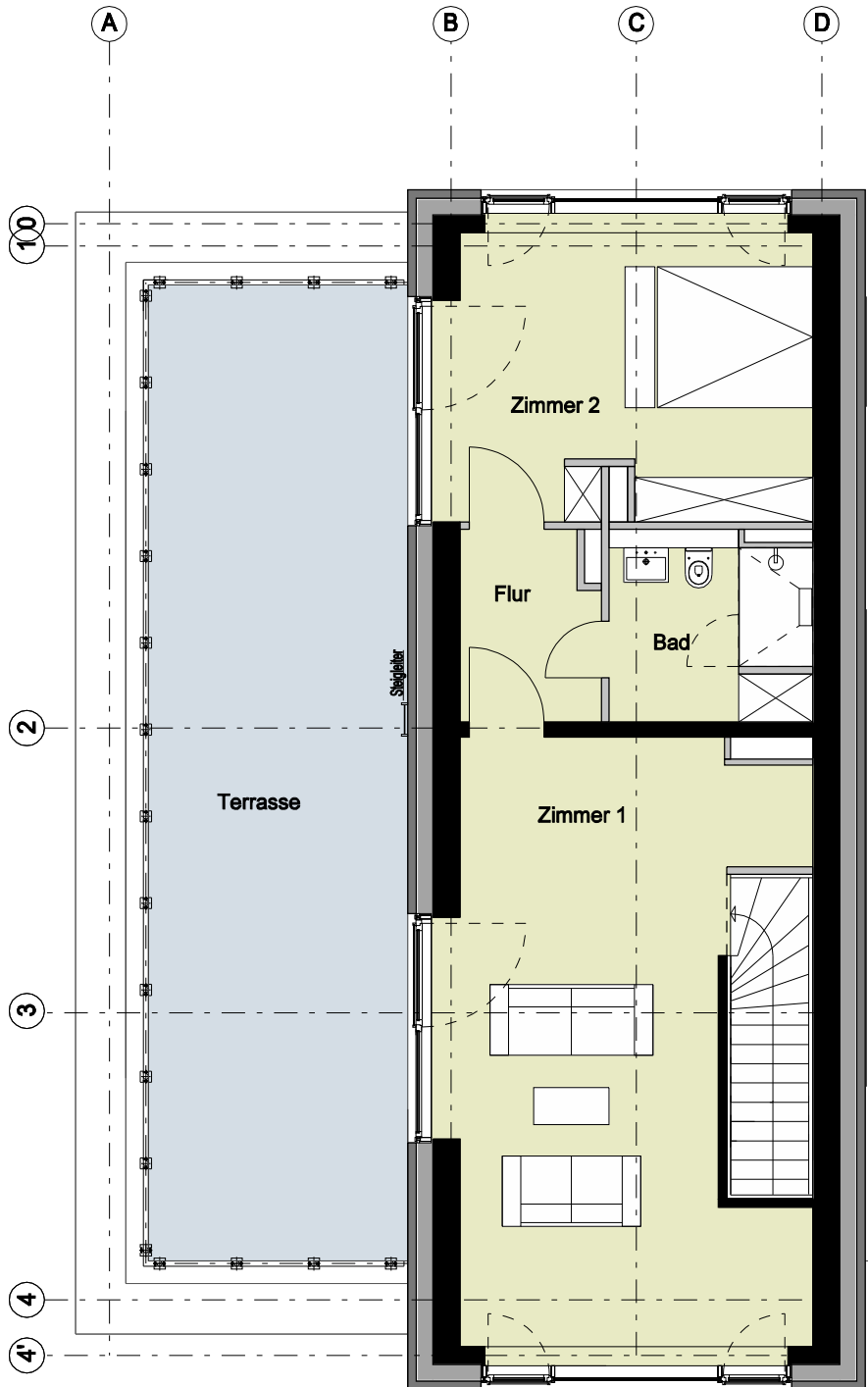
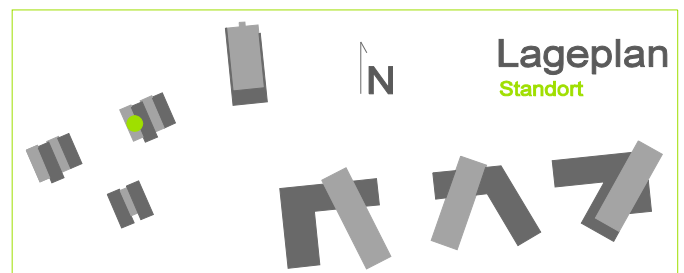


Bauteil B2 - 3.Obergeschoss - Wohnung 115



2 Zimmer	
Zimmer 1	ca. 34,1 m <sup>2</sup>
Flur	ca. 4,7 m <sup>2</sup>
Bad	ca. 6,8 m <sup>2</sup>
Zimmer 2	ca. 19,3 m <sup>2</sup>
Terrasse (50%)	ca. 22,8 m <sup>2</sup>
<b>Wohnfläche</b>	<b>ca. 87,7 m<sup>2</sup></b>



Vermietungsunterlagen M 1:100 1 m 2 m